

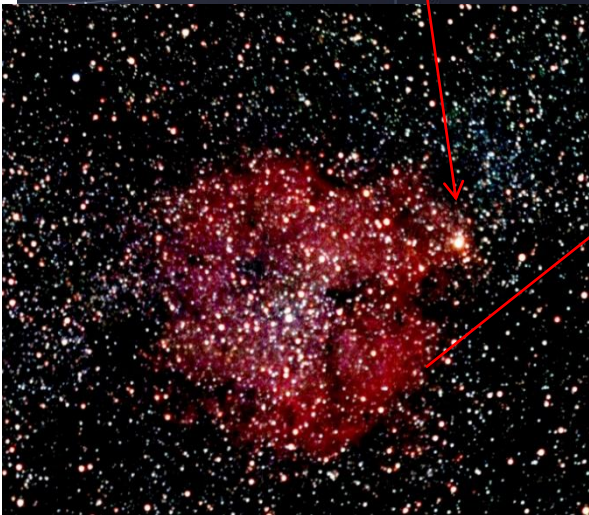
Mar 11 Sky notes

View facing North 09:00pm on Mar 1st 2012

(70deg Field of View)



Mu Cephei (350,000-x power of sun)
Most luminous star in galaxy



5 FPS 2012-03-01 21:57:56

IC1396 (3deg)
Large HII region
2400 lt yrs away
Illuminated by O-type
supergiant star
Dark dust lanes

Globular cluster M92
26,400 lt yrs away
One of brightest
Globular clusters
In N.hemisphere
(well seen in small
Telescopes)



View facing East 09:00pm on Mar 1st 2012 (68deg Field of View)



73° 15.3 FPS 2012-03-01 21:54:51

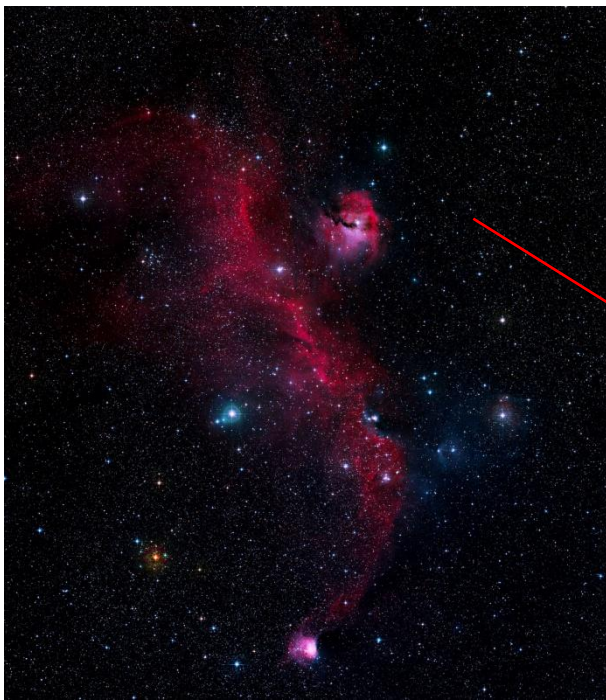
Globular cluster M3
33,900 lt yrs away
One of the densest cores
For a globular cluster
(50% of mass in 22 lt yrs)
Large no of RR Lyrae variable stars
(Short period(0.2-2dys) & pulsating
with period- luminosity correlation)

Blackeye Galaxy M64
24 million lt yrs away
Prominent dust lane
(result of galactic interaction
/merger of 2 galaxies
(well seen in a small telescope)



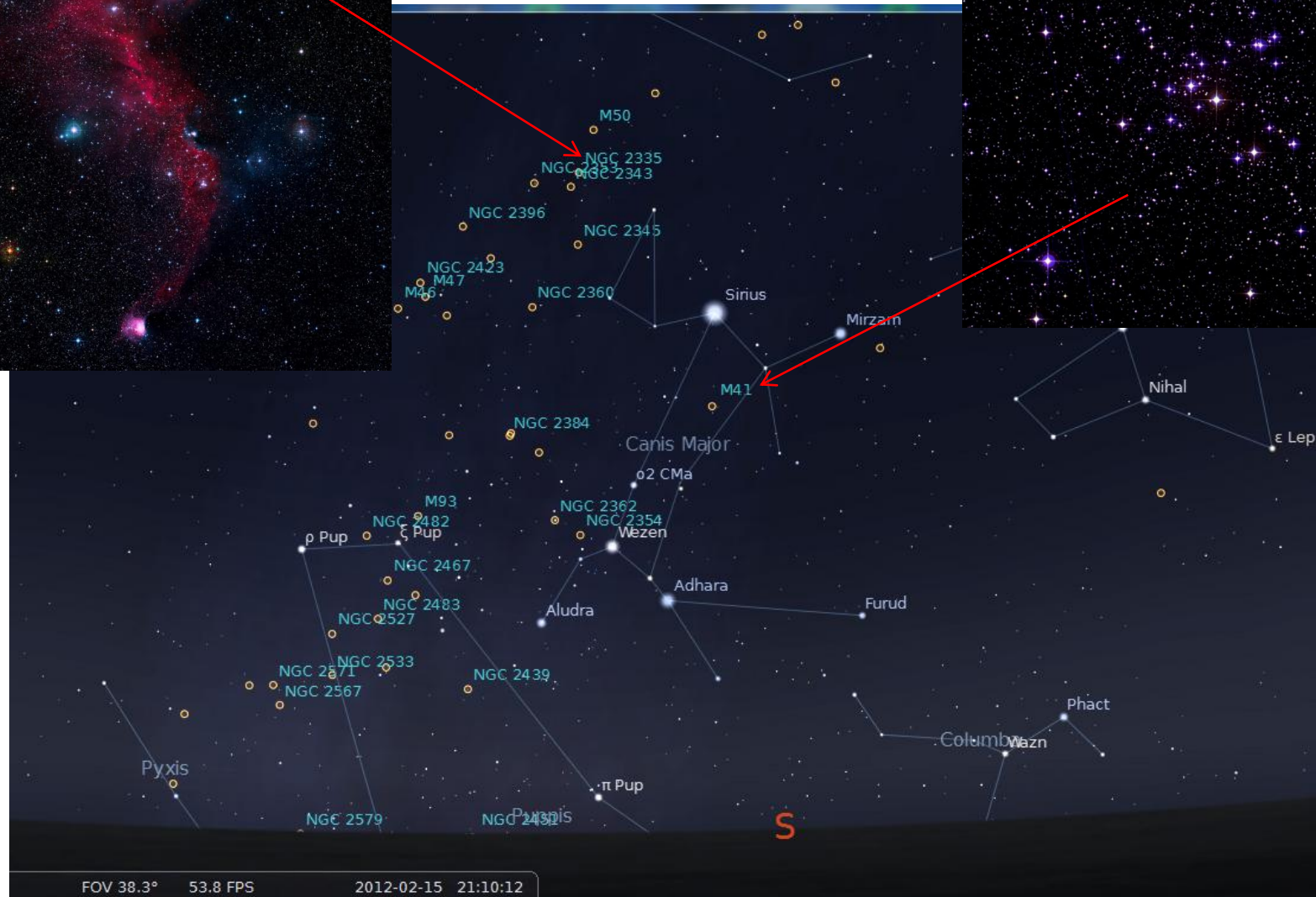
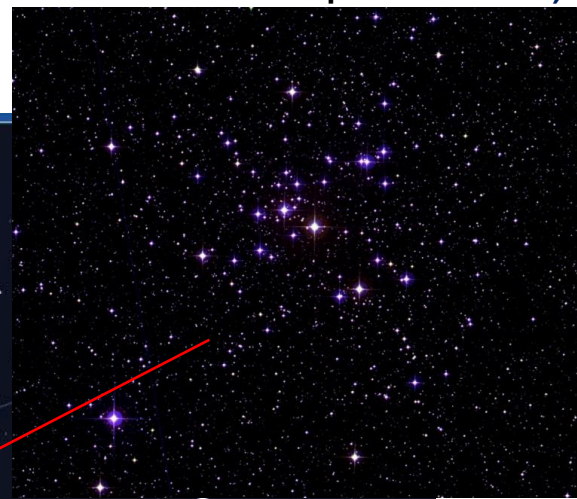
Seagull Nebula IC2177(1800 lt yrs)

March 2012 Constellation of month: Canis Major

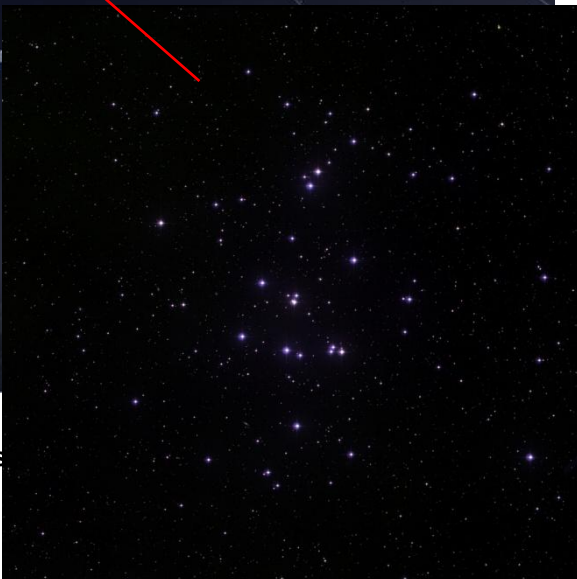
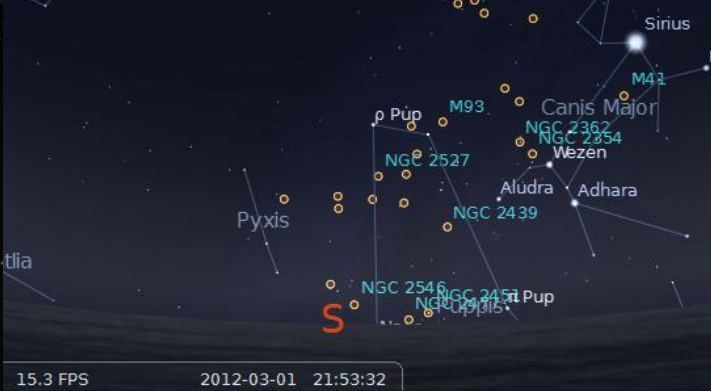


Bright HII region
Emission/reflection nebulae
Dark dust clouds
Head of gull(NGC2327)
- 1 million yrs old

Open cluster M41(2300 lt yrs away)
About 35 hot O/B blue giant stars
Star with reddish tint at cluster centre
(well seen in small telescope / binoculars)



View facing South 09:00pm on Mar 1st 2012



15.3 FPS 2012-03-01 21:53:32

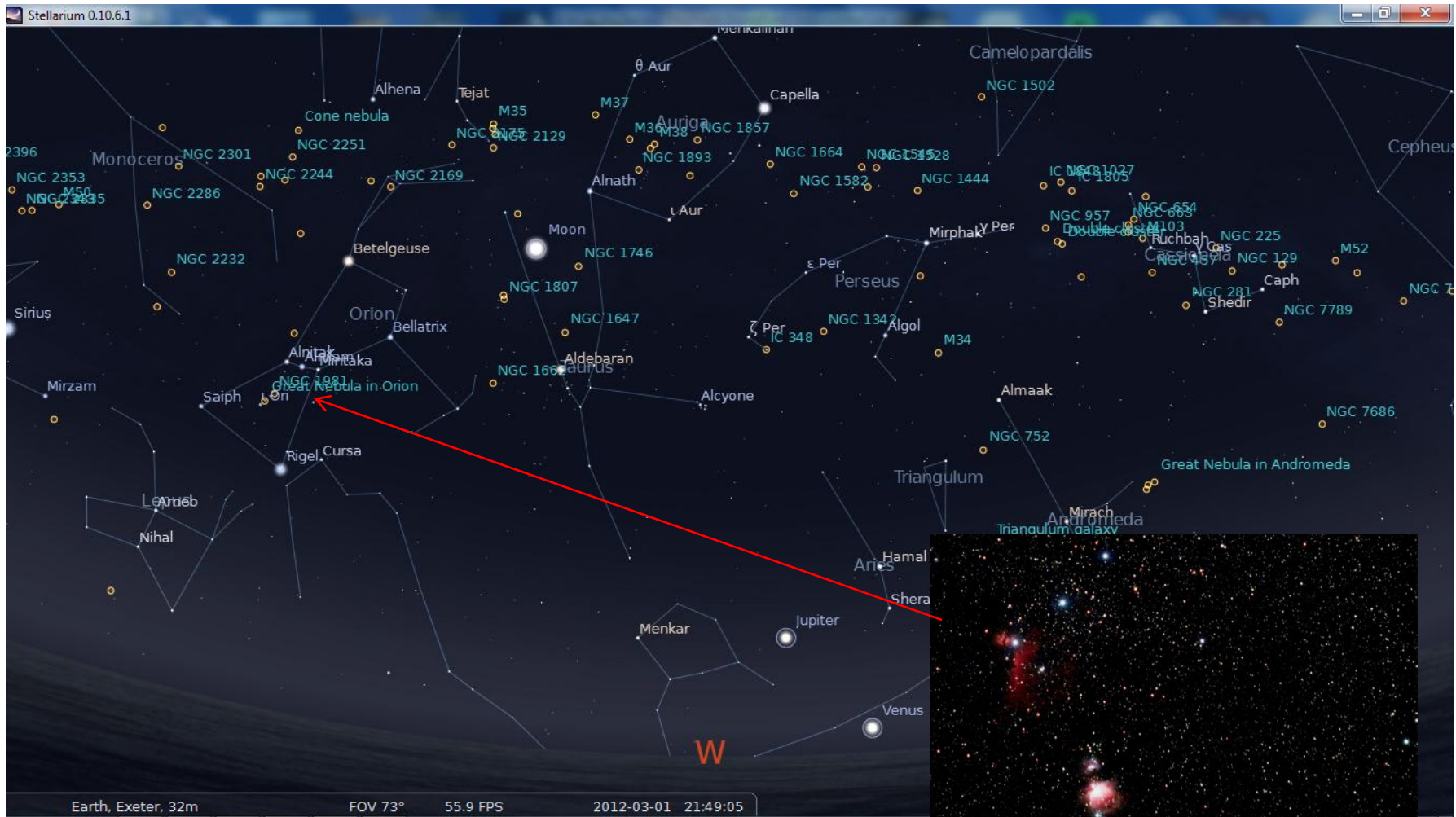
<p>Old star cluster-About 500 stars Many Class K/M (red giant) stars Located in outer disk of galaxy Age : 4 billion yrs (similar to Sun) Stars are v.similar to sun(G type) Our sun may have been a member Of this cluster?</p>	<p>Young star cluster Only 400million yrs 10 light yrs size 350 stars Hot blue O/B stars</p>
--	--

Open Cluster M67 (2500 light yrs)
 good telescope/binocular object

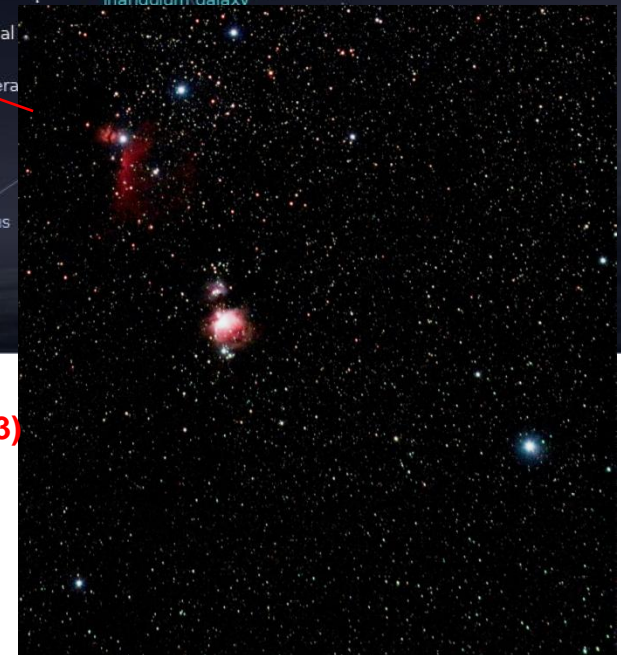
Open Cluster M44(577 light yrs)
 good telescope/binocular object

View facing West 09:00pm on Mar 1st 2012

(68deg Field of View)

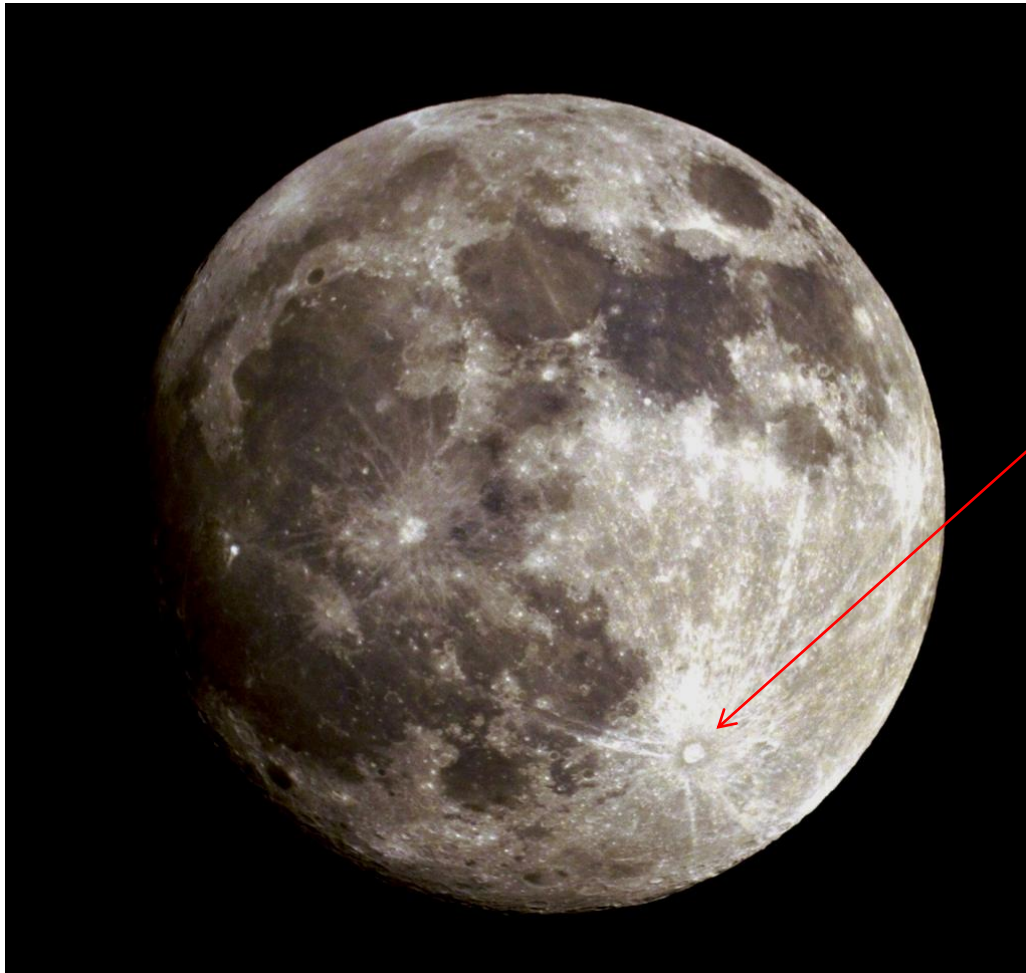


Orion`s Belt and sword(great Orion nebula M42/M43)
Last chance for viewing until autumn

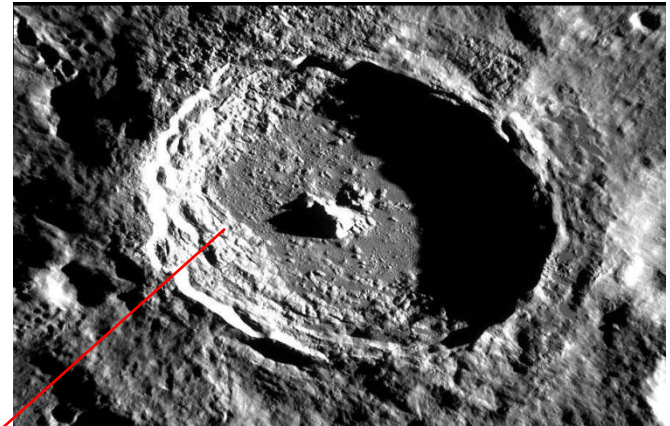


Moon

full moon (Mar 8th) , last quarter(Mar 14th) , new moon (Mar 22nd) , first Quarter (Mar 30th)



8" SCT image / canon DSLR



Crater Tycho (LRO image)

Most conspicuous crater visible near Full moon

**Surrounded by great radiating long rays
(partly encircling moon)**

**Terraced walls / flat floor / central peak
(85km wide / 4.8km deep / 2.25km central peak)**

**Formed by oblique impact on moon
(8-10km wide object)**

**Impact occurred 109 million yrs ago
(dinosaurs on Earth)**

Tycho ejecta possibly hit the Earth

Solar System Sky notes (Mar 2012)

Mercury

Optimum viewing – Mar 7th (7:00pm) – altitude only 9deg (magn -0.4)

Venus

Very bright in western sky after sunset– altitude 30deg (magn -4.3) size about 20”

(64% phase (Mar 1st) – 49% phase (Mar 31st))

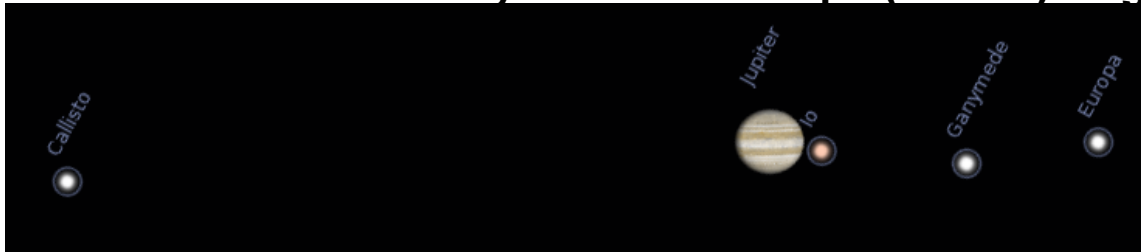
(Observational opportunity : Venus and Jupiter separated by only 2deg in western sky)

Mars

Just below constellation of Leo (**visible low in East after sunset**) magn -1.2 ,13.8” size northern polar cap region visible

Jupiter

Close to Venus in western sky – sets at 10:30pm(Mar 1st) Magn -2.1 ,35” size



Jupiter (Mar 1st 8:30pm)
Stellarium simulation

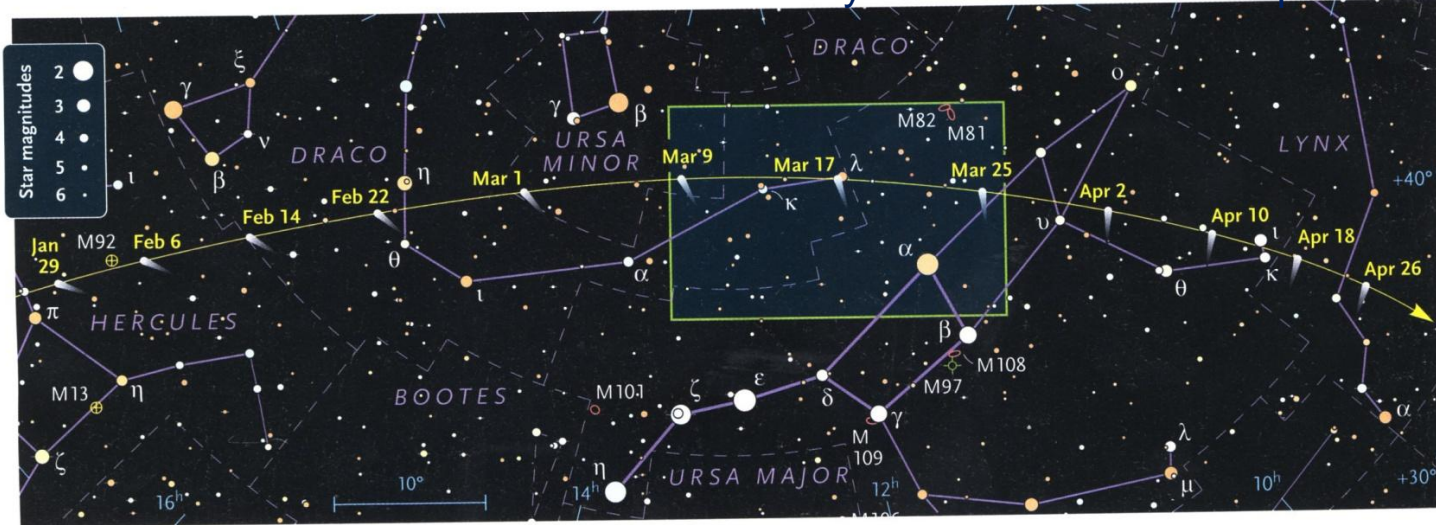
Saturn

Rises by 10:30pm (Mar 1st) – close to star Spica(Virgo) Magn +0.5 20” size , ring tilt 15deg

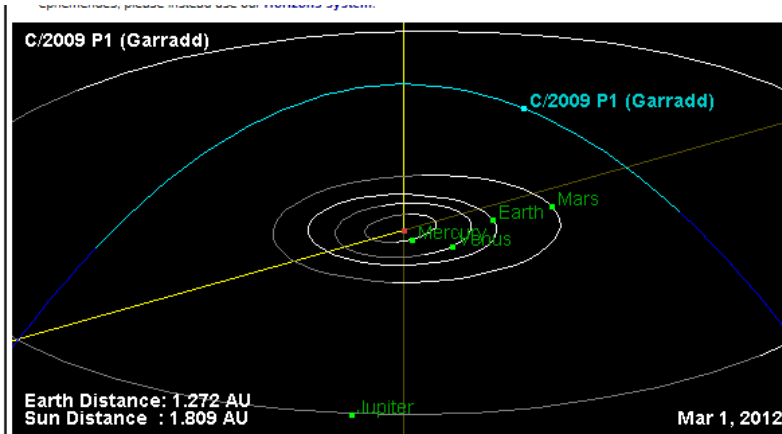


Comet Garradd

Comet Garradd will traverse across northern sky between mid Feb – Apr 2012 :

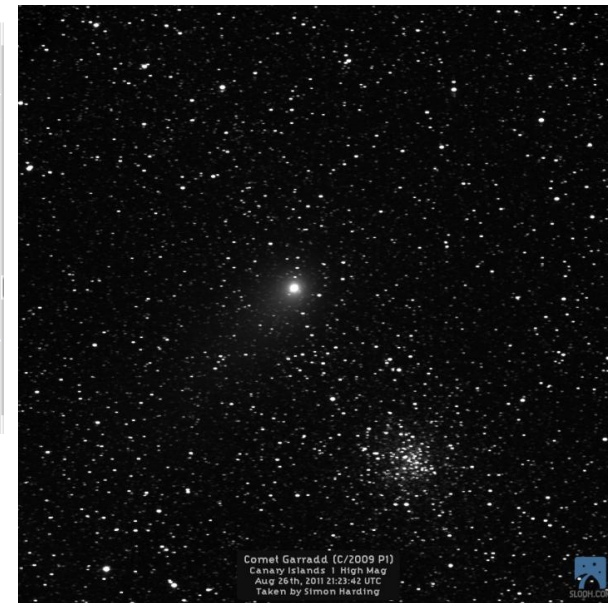


Wide field image
(S.Harding Aug2011)



Comet Garradd has shown **dust / ion tails** and optimum time for observation:
Moonless nights Mar 9th – 27th

Magn +6.4(Mar 1st) to +7.2 (Mar 31st)



Comet Garradd near M71(aug 2011)
SLOOH