

Feb 12 Sky notes

View facing North 10:00pm on Feb 9th 2012 (68deg Field of View)



Owl Nebula NGC457
Open cluster
9000 lt yrs away
(bright stars Phi Cass & HD902)



Bubble nebula NGC7635
HII region in Cassiopeia
Bubble created by
Strong stellar wind
From central star
(7000 light yrs away)

54.7 FPS 2012-02-09 22:00:03

View facing East 10:00pm on Feb 9th 2012 (68deg Field of View)

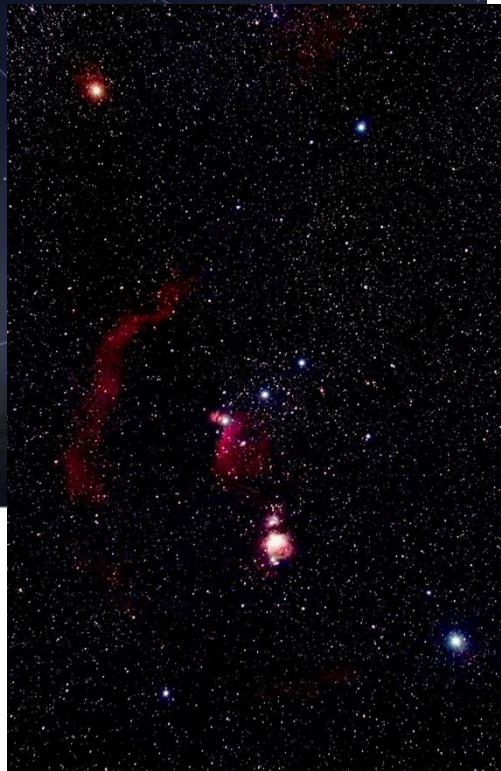
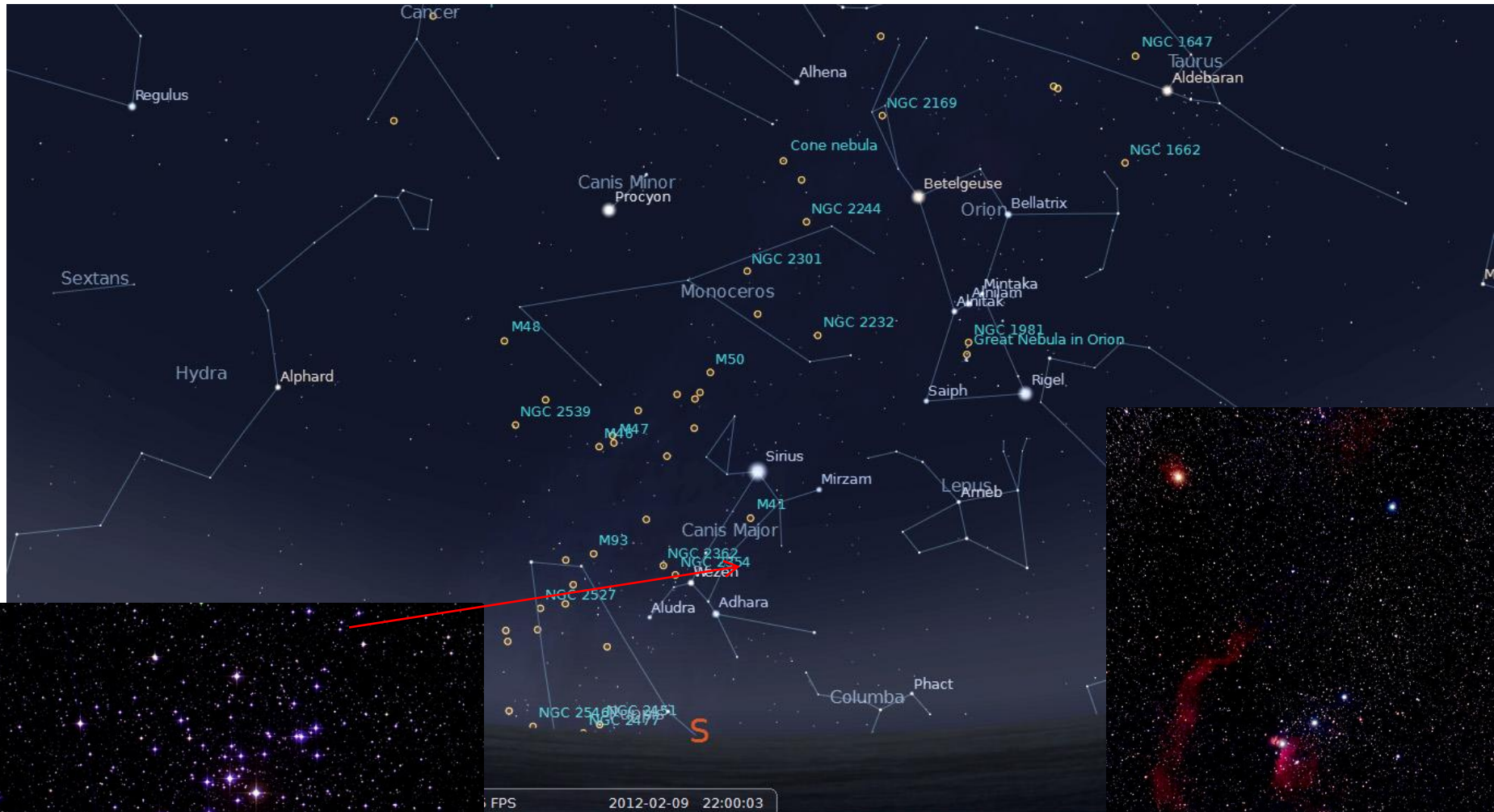


Globular cluster M3
30,600 light yrs away
One of the brightest globulars
Magn +6.2
Over 500,000 stars



Spiral Galaxy NGC2903
One of brightest barred spiral galaxies in spring sky
25 million light yrs away

View facing South 10:00pm on Feb 3rd 2012 (68deg Field of View)



FPS 2012-02-09 22:00:03

<p><u>Open Cluster M41</u> About 100 stars Within 26 light yrs Mostly hot blue stars Central star is K type red giant (700 x more luminous than sun)</p>	<p><u>Orion wide field image</u> (50mm lens - 5min exp) Image shows Barnard's Loop (part of Orion) Molecular cloud – centred On Orion nebula) 300 lt yrs size /1600 lt yrs Away (supernova remnant)</p>
--	---

Feature of Month (Feb 12)

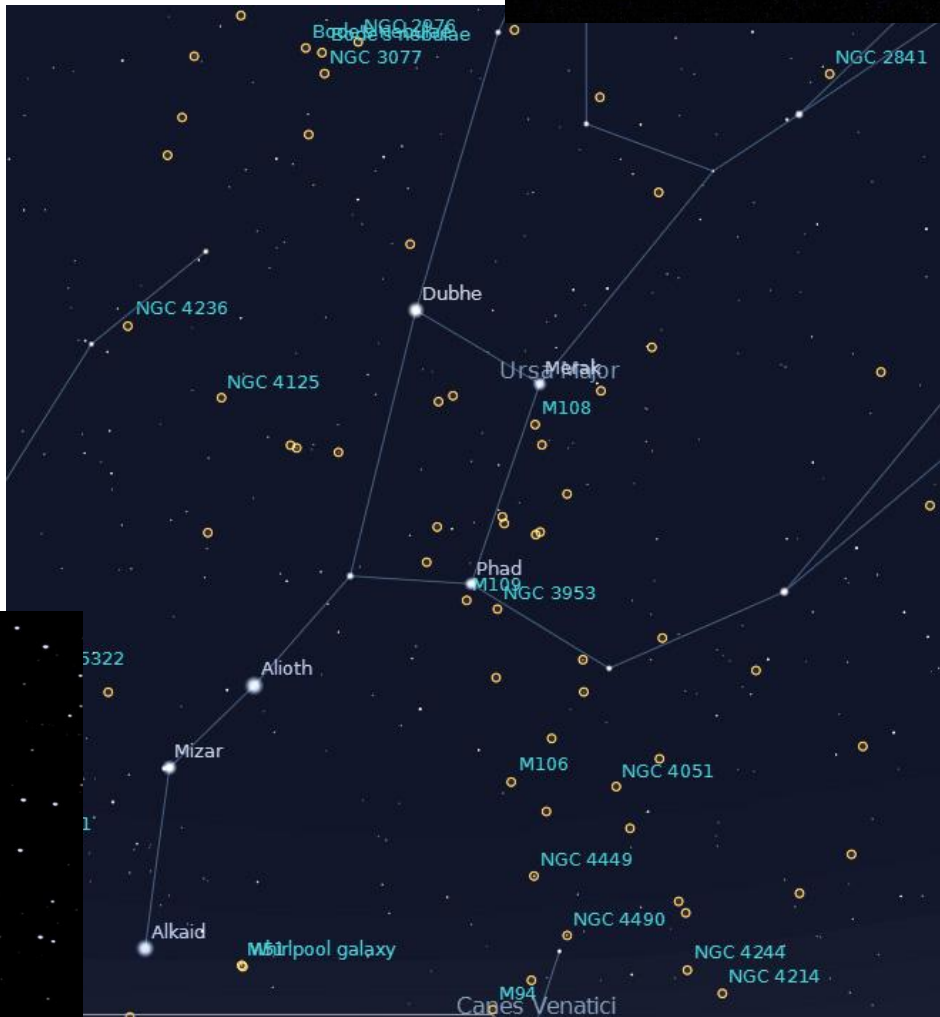
- Ursa Major Galaxies

Galaxy Pair M81/M82

(12 million lt yrs away)

Irregular/classic spiral
Galaxies

(10" astrograph)



Irregular galaxy M108

(45 million lt yrs away)

Edge on (No core / bulge)

Dusty regions

H II regions

(10" astrograph)



Barred spiral M109

55 million lt yrs away

Symmetric barred spiral

Central bulge/ tight spiral arms
(similar to Milky Way)

(DSS image)



Whirlpool galaxy M51

(37 million lt yrs)

Classic spiral / interacting galaxy

NGC5195 moving away from M51



Pinwheel Galaxy M101 (23 million lt yrs away)

Huge galaxy (170,000 lt yrs size) large no of H II regions

View facing West 10:00pm on Feb 3rd 2012

(68deg Field of View)



Open Cluster M45

B type stars (hot and luminous)

Reflection nebulosity produced by dust surrounding stars

Cluster is 100 million It yrs old – will survive 250 million It yrs

450 It yrs distance

Moon

Full moon (Feb 7th) , last quarter(Feb 14th) , new moon (Feb 21st) , first Quarter (Feb 29th)

Lunar Rays



Copernicus (93 km)- surrounded by bright rays (over 700 km across surface)

Rays – bright highland material excavated during impact - thrown radially outwards during impact

Kepler (31 km) – bright ray system (smaller than Copernicus)

Solar System Sky notes (Feb 2012)

Mercury

Best visibility – Feb 29th – 7 deg altitude

Venus

Bright in Western sky after sunset – Magnitude -4.1 , size about 17 “ , phase 64 – 75%

Mars

Rises by 8pm – on border of Virgo/Leo - magnitude -1.0 (about 13” across)

Jupiter

Setting by midnight (mid Feb) – magn -2,0 , (about 40” across)



Jan 16th 20:02pm



Jan 16th 22:12pm

(SLOOH T2 telescope)

Saturn

Rises by 11:30pm(mid month)

-Rings tilted by 15deg

- Magn +0.6 Size 40”

(Stellarium Feb 10th)

