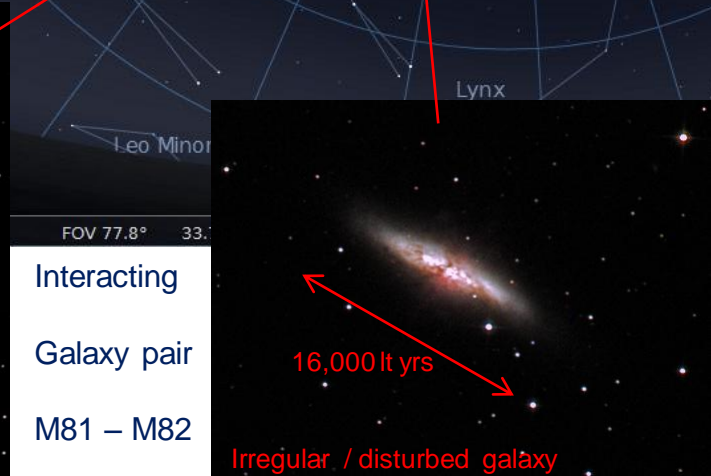
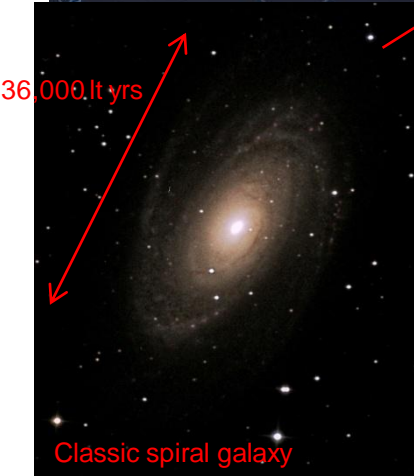
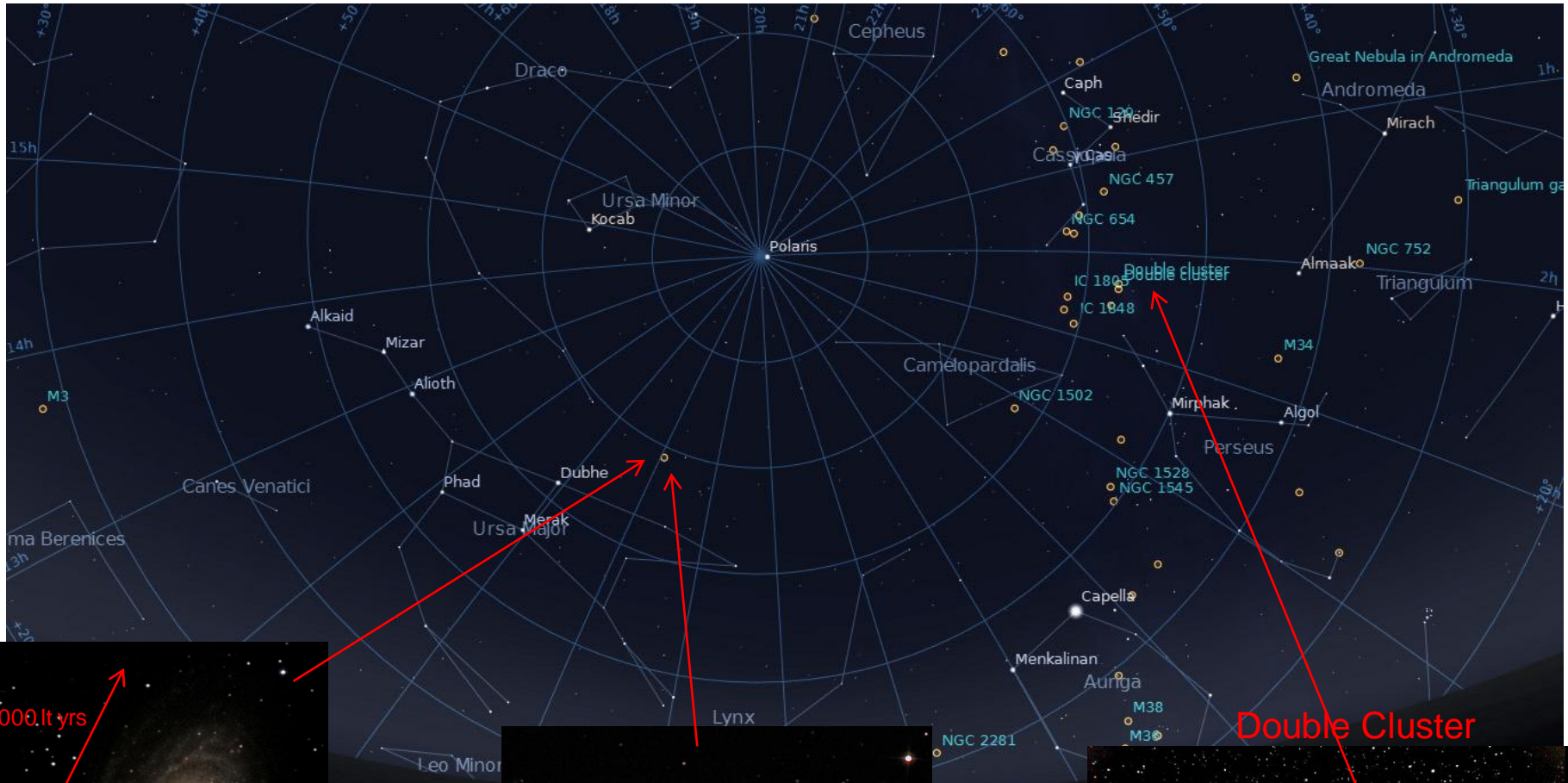


Sept 11 Sky notes

The Northern Sky as seen at 9pm on Sept 29th 2011



Double Cluster

Distance :12 million lt yrs , separation :100,000 lt yrs

Fine binary open cluster : distance 7300 lt yrs

The Southern Sky as seen at 9pm on Sept 29th 2011

Ring Nebula M57
(planetary neb)



Dumbbell Nebula M27
(planetary neb)



Lagoon Nebula M8
(dist 5,200 lt yrs)



Trifid Nebula M20
7000 lt yrs



Globular cluster M15 (dist 33,600 lt yrs)

The Western Sky as seen at 9pm on Sept 29th 2011



Globular cluster M5
Distance 23,000 lt years
(1 million stars within 130 lt yrs) :



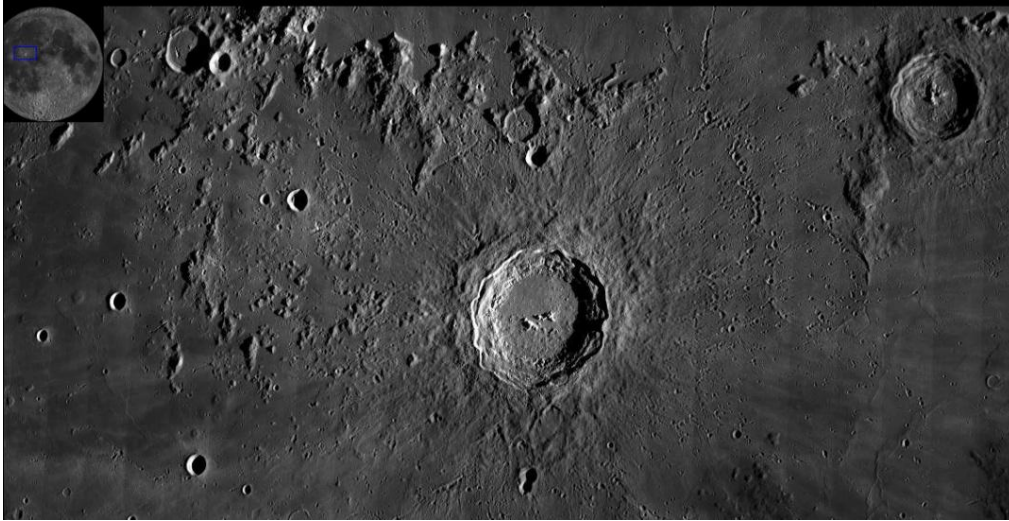
Globular cluster M13
Finest & brightest globular cluster
In northern hemissphere –just visible to naked eye
Distance : 25,000 light years
(1 million stars within 165 light years)



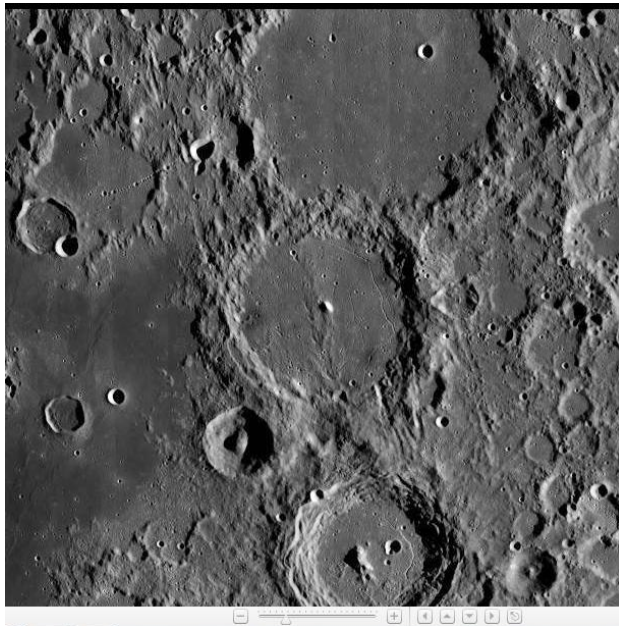
Moon :1st quarter (Sept4th) ,Full moon(Sept 12th) , Last quarter(20th) , New(Sept 27th)

Lunar image resource : http://wms.lroc.asu.edu/lroc_browser/view/wac_nearside
(Lunar Reconnaissance Orbiter imagery)

Meade 8" SCT images
(S.Harding)



Copernicus
Crater
(93km diameter)



Craters :

Ptolemaeus
(153 km diam)

Alphonsus
(119km diam)

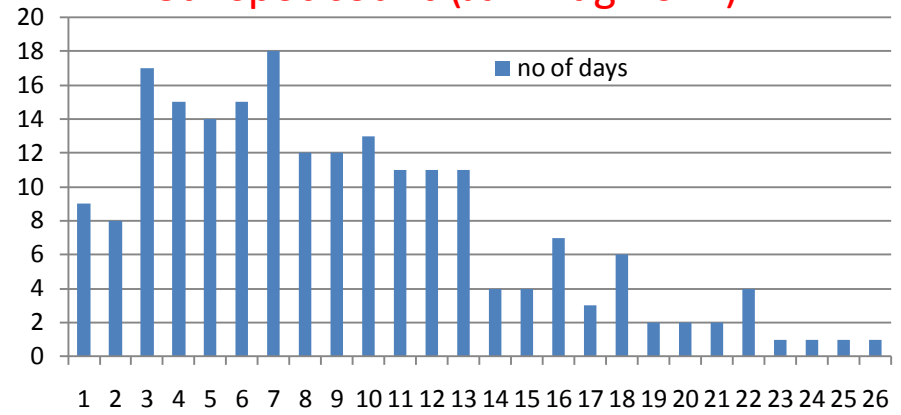
Arzachel
(96km diam)



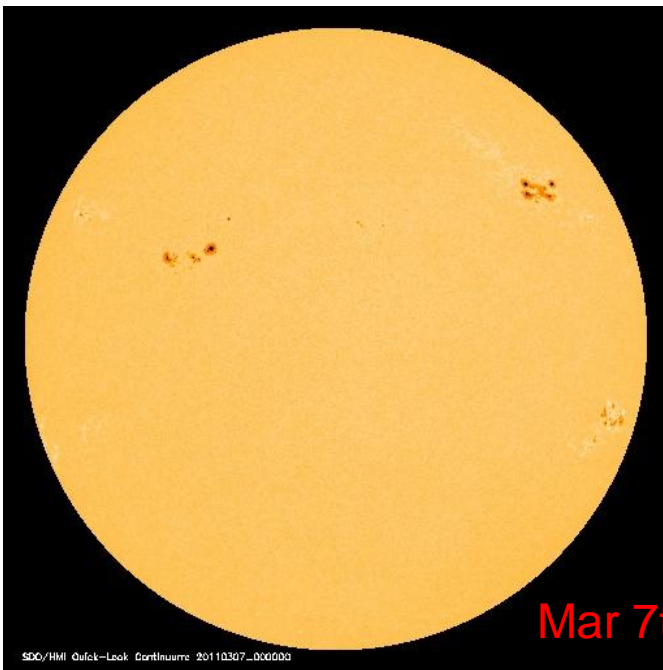
Solar white light imagery (May – Aug 2011)

SOHO data(sohowww.nascom.nasa.gov)

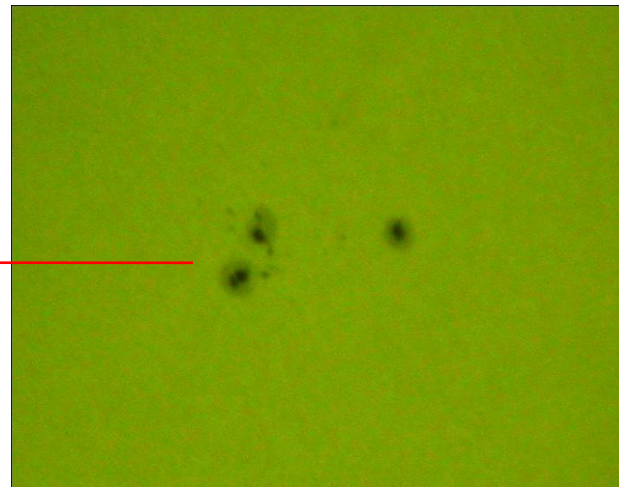
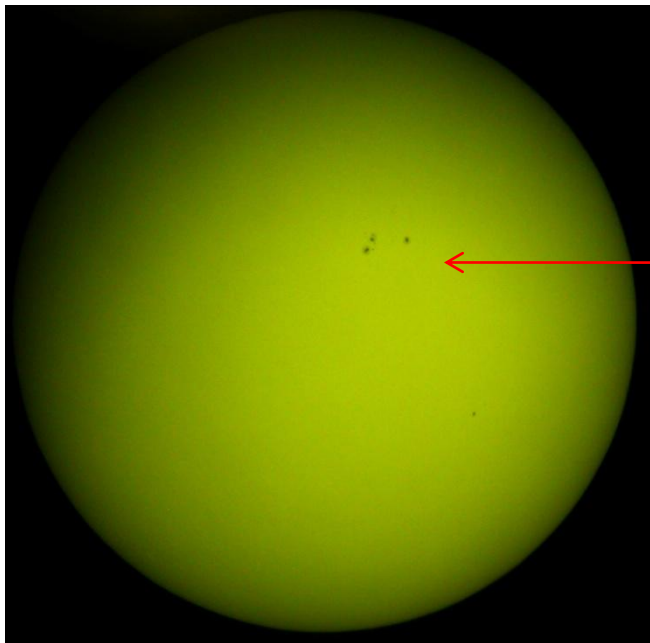
Sunspot count (Jan-Aug 2011)



No of sunspots



Solar imaging(Aug 2011)



ETX90 + 40mm eyepiece / white light solar filter
Nikon coolpix camera (S.Harding 20-aug-11)

Solar prominence

(Coronado H-alpha telescope image)
26-aug-11 (M.Bastian)



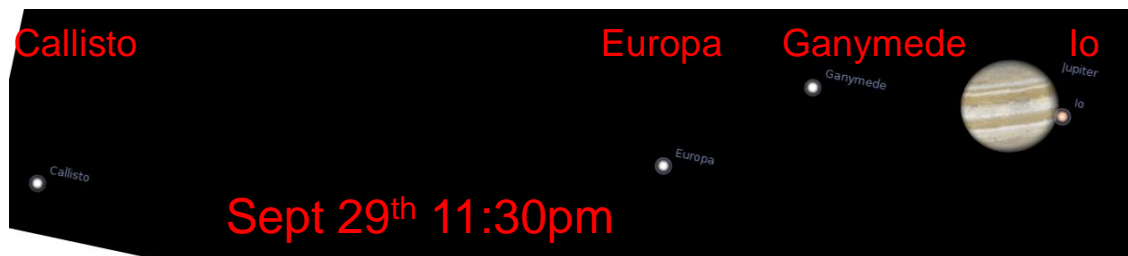
Planets (Sept 2011)

Mercury : **well seen in morning sky (early Sept)** . Close to Regulus(Sept 7th) & magn -0.6
Maximum elongation on Sept 3rd – 18deg . Invisible later in month

Venus : **not visible this month**

Mars : **visible in the morning sky** – moving through Gemini and Cancer . Close to open cluster Praesepe (M44) at end of Sept – traverses through cluster on Oct 1st/2nd . Magn +1.4 , size : 4-5 “

Jupiter : **rises by 9pm (mid month) in Aries** . Maximum altitude of 50deg when due south , Size of disc : 50” , magn -2.7 . Revival of South Equatorial belt .



8" SCT 28/08/11
S.Harding

Saturn : not visible this month

Comet Garradd (Aug 2011)



Comet Garradd near globular cluster M71
SLOOH 14" SCT telescope (26-08-11)



Comet Garradd (28-08-11)
8" SCT S.Harding 55 sec exposure