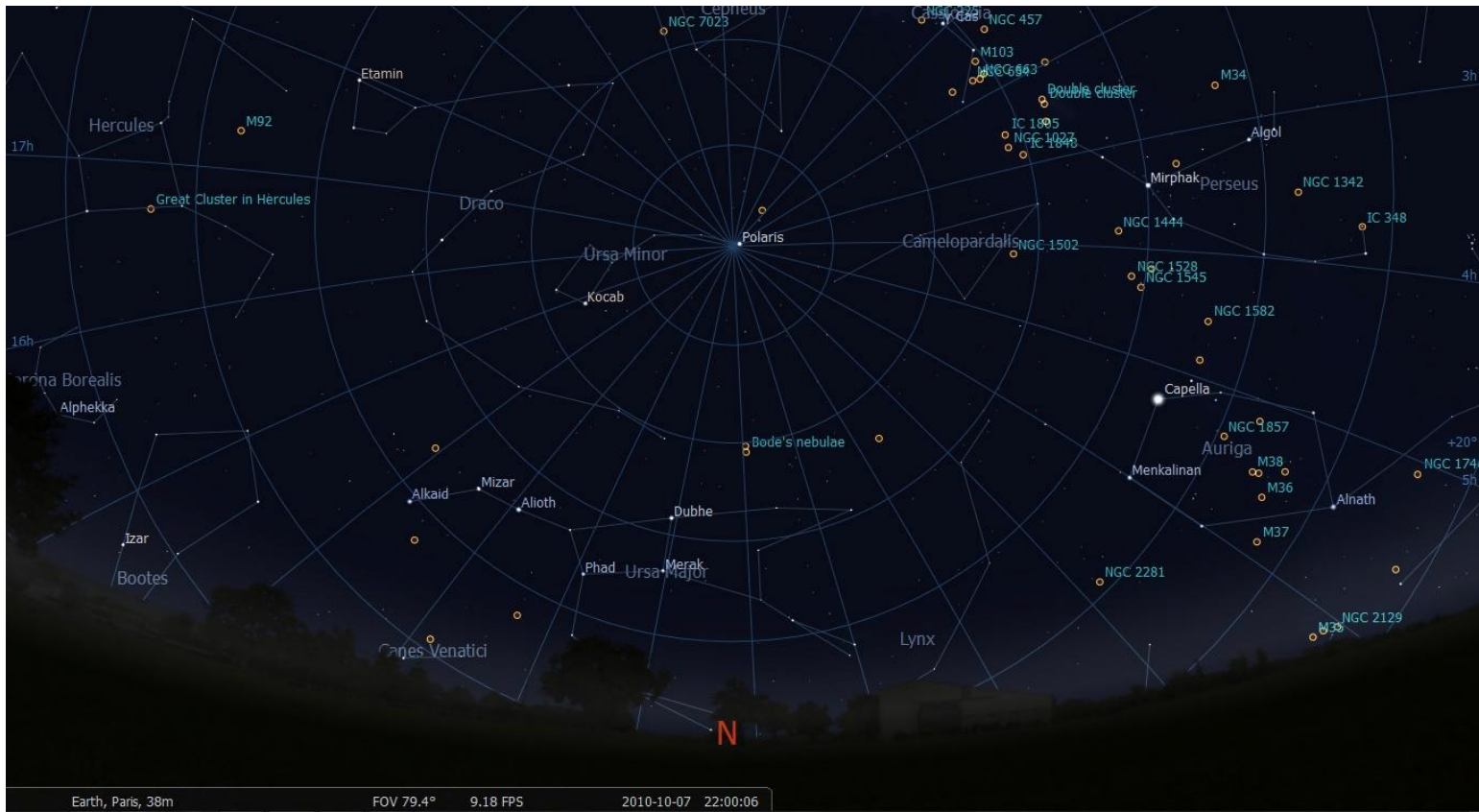


Oct10 Sky notes

Based on sky visible at 10:00pm 7th Oct

View of Sky facing North on Sept 16th 2010

(80deg Field of View)



Ursa Major – visible on low on northern horizon

Auriga – low on north – eastern horizon (brightest stars : Capella)

Perseus – rising in North East – Variable Star Algol – Open clusters (Double Cluster /M34)



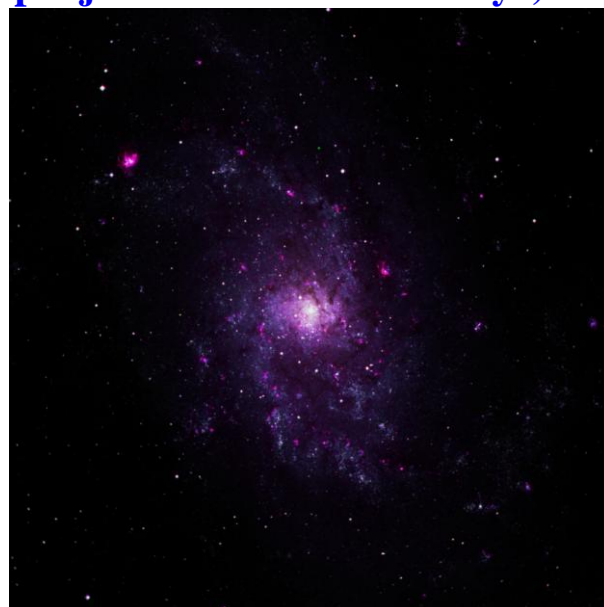
Cassiopeia – above Perseus – bright open clusters (M103 / NGC457/ M52) –constellation of month



Pisces – high in south - east – bright Planets Jupiter (magn -2.9) / Uranus (magn 5.7)
Taurus - low on eastern horizon – bright orange star Aldebaran – Hyades-Pleiades
Andromeda – due East – Andromeda Galaxy (M31) – (dist 2.9 million light yrs)
(Closest Galaxy to Milky Way in Local Group – just visible to Naked Eye)



Andromeda Galaxy(M31)



Triangulum Galaxy(M33)

Triangulum – below Andromeda – M33(Triangulum Galaxy) - (dist of 3 million lt yrs)
(difficult to see due to low surface brightness)



**Wide Field image of constellation of Auriga (showing various open clusters)
Canon 350D / 50mm f/1.8 lens (30-09-10)**



**Wide Field image of constellation of Cassiopeia (showing comet Hartley)
Canon 350D / 50mm f/1.8 lens (30-09-10)**



**Wide Field image of constellation of Perseus (showing comet Hartley)
Canon 350D / 50mm f/1.8 lens (30-09-10)**

View of Sky facing South at 10:00pm on Oct7thth 2010 (85deg Field of View)



Pisces - - due south – Planets Jupiter / Uranus



Square of Pegasus – globular cluster M15

Vulpecula Dumbell Planetary Nebula M27

Aquila – low in south west - bright star Altair (Summer Triangle)



Wide Field image of Deneb / North American Nebula (NGC7000) and star fields

Also Nebulosity around Sadr (Gamma Cygni) – Butterfly Nebula (IC1318)

Image taken with modified Canon 350D / 50mm lens (f/1.8) August 2010

Stak of 8 x 30 sec exposures



Hercules – Great Globular Clusters M13

Lyra – Bright star Vega – Ring Nebula M57

Summer Triangle – bright stars – Altair (Aquila) – Deneb(Cygnus) – Vega (Lyra)

Moon :

New Moon (Oct 7th), First Quarter (Oct 14th), Full moon (Oct 22nd) ,Last Quarter (Oct 30th)

Solar System – Oct 10

Mercury

Visible during first week in October before sunrise

Venus

Very difficult to see this month – sets only 20 min after sun (1st week in oct)

Mars

Visible very low in south west just after sunset (1st week in Oct)

Jupiter

Brilliantly Visible in east after sunset – close to Circlet in Pisces (skymap – East)

Transits meridian late evening - **finest appearance in 47 years (magn-2.9/50"-47")**

South Equatorial belt (SEB) has disappeared – **maybe masked by overlaying cirrus cloud**

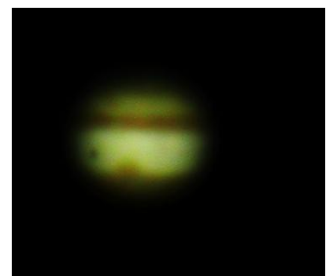
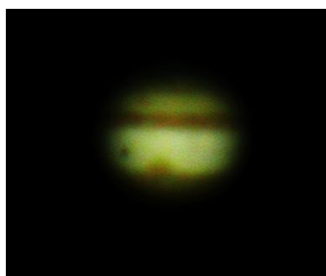
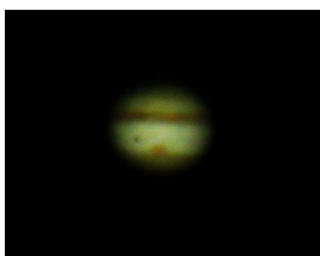
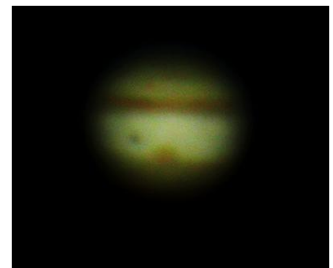
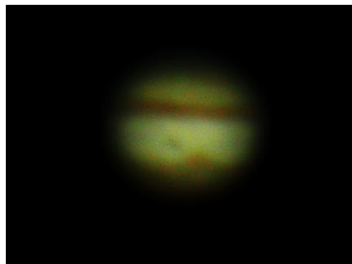
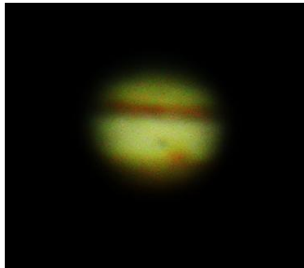


8" SCT (Sept 1st)



14" SCT (SLOOH) Sept 7th

Good chance to observe transits of moons and GRS across face of Planet (17/Sept/10) :



Saturn

Low in east just before sunrise (Virgo) –

Uranus

Magn +5.7 --Only 1 deg north of Jupiter in Sept – **can see both Planets in binoculars :**

Comets :

103P/Hartley :

Approaching Sun / Earth in second half of October – **could be visible in binoculars**
(fairly faint at moment – early Oct)

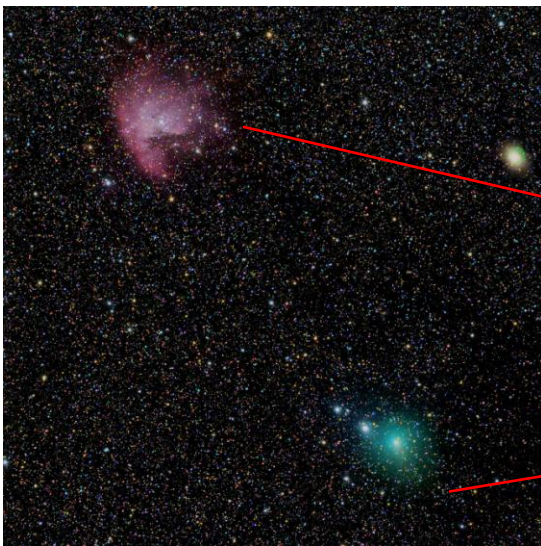
Path of comet in sky (Sept – October)

6th Magn (Oct 1st) – Alpha Cas

5th / 6th Magn (Oct 7th) – 1 deg from Double Cluster – **great visual / photo opportunity**

Closest approach to Earth- Oct 20th (0.12 au)

November – Deep Impact Spacecraft will flyby comet –(reveal sources of dusty jets from nucleus)



R. Ligustri (14" SCT)

S.Harding (f/1.8 50mm lens)

Comet Hartley / Emission Nebula NGC281 – Oct 1st 2010 (14" SCT) – no tail visible